

## SPAN TABLES (CONTINUED)

0.60kPa				
CLADDING DETAILS (PLASTERBOARD)	Furring Channel Spacing (mm)			
	Single Span		Continuous Span	
	450	600	450	600
1 x 10mm	1070	970	1320	1210
1 x 13mm	1120	1030	1380	1190
1 x 16mm	1120	1030	1330	1160
2 x 10mm	1020	930	1270	1140
2 x 13mm	1060	970	1280	1110
2 x 16mm	1030	950	1220	1060

0.70kPa				
CLADDING DETAILS (PLASTERBOARD)	Furring Channel Spacing (mm)			
	Single Span		Continuous Span	
	450	600	450	600
1 x 10mm	1020	930	1270	1130
1 x 13mm	1070	980	1290	1120
1 x 16mm	1070	980	1250	1090
2 x 10mm	980	890	1220	1080
2 x 13mm	1020	930	1210	1050
2 x 16mm	1000	920	1160	1000

0.80kPa				
CLADDING DETAILS (PLASTERBOARD)	Furring Channel Spacing (mm)			
	Single Span		Continuous Span	
	450	600	450	600
1 x 10mm	990	900	1220	1070
1 x 13mm	1030	950	1220	1050
1 x 16mm	1030	950	1190	1030
2 x 10mm	950	860	1180	1020
2 x 13mm	990	900	1150	1000
2 x 16mm	970	890	1100	960

Service limited: Dead Load only L / 600

Service limited: G + W<sub>s</sub> Limit L / 200

Unshaded results are strength limited: 1.2G+W<sub>u</sub>

0.90kPa				
CLADDING DETAILS (PLASTERBOARD)	Furring Channel Spacing (mm)			
	Single Span		Continuous Span	
	450	600	450	600
1 x 10mm	950	870	1170	1010
1 x 13mm	1000	910	1150	1000
1 x 16mm	1000	910	1130	980
2 x 10mm	920	840	1120	970
2 x 13mm	960	870	1100	950
2 x 16mm	940	860	1060	920

1.00kPa				
CLADDING DETAILS (PLASTERBOARD)	Furring Channel Spacing (mm)			
	Single Span		Continuous Span	
	450	600	450	600
1 x 10mm	920	840	1110	960
1 x 13mm	970	880	1100	950
1 x 16mm	970	880	1080	940
2 x 10mm	890	810	1070	930
2 x 13mm	930	850	1050	920
2 x 16mm	910	840	1010	900

### NOTES:

1. Stated wind pressures are Ultimate (W<sub>u</sub>), including all local pressure factors.
2. Serviceability checked to L / 600 under dead load only and L / 200 under dead plus Wind.
3. Service wind load taken as 0.68 times Ultimate (W<sub>u</sub>) unless noted otherwise.
4. Connections to be independently checked by a suitably qualified engineer, or refer to Judah.
5. The tables are not suitable for cyclonic regions, which should be referred to a suitably qualified engineer or Judah.
6. Multiple layer results are not to be used for design of fire rated ceiling systems.

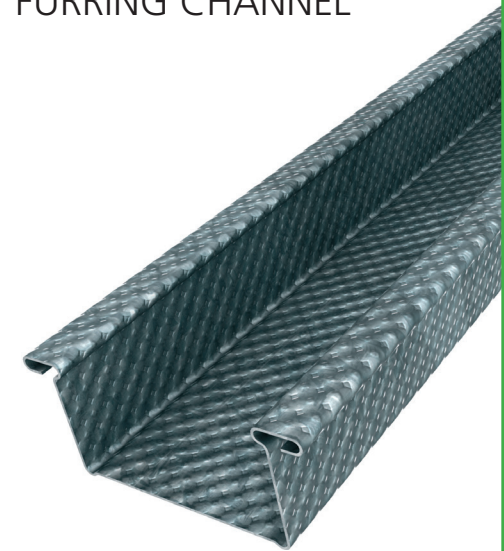


JUDAH and ARMOUR® are registered trademarks

## TECH BRIEF

# 80

**NEW:** Judah 309A ARMOUR®  
FURRING CHANNEL



The new Judah ARMOUR® 22mm Furring Channel is a lightweight, cost-effective addition to the Judah KEY-LOCK® System, which can be used in flush plasterboard applications where fire rating is not required. >>



[www.Judah-Steel.com](http://www.Judah-Steel.com)

# 309A: LIGHTWEIGHT AND COST EFFECTIVE

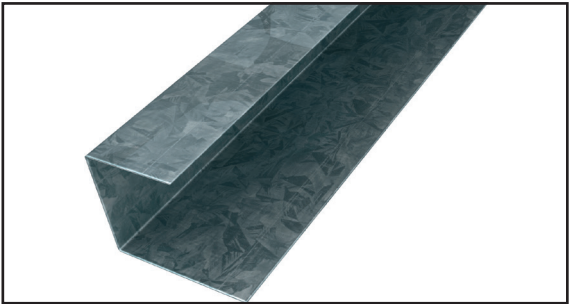
Complemented by the new Judah 22mm Wall Track (Part number 143), the Judah 309A is easily compatible with Judah's standard range of Furring Channel fixing clips and connectors.

Manufactured using a distinctive dimpling technology to provide added strength, 309A has a unique "ARMOUR®" finish that improves screw alignment and retention, whilst also making it easier to handle and identify on site.

Designed and tested to meet current code requirements, Judah 309A can be installed according to the span tables provided on the back page for your next ceiling design.

Available this December, Judah ARMOUR® Furring Channel joins other components in the Judah KEY-LOCK® Concealed Ceiling System range and is available in 3600mm, 4800mm & 6000mm lengths, and in stock packs of 120.

The new Judah 143 Wall Track has been released in the standard length of 3000mm and in stock packs of 100 pieces.



143 WALL TRACK

For more information, visit [www.Judah.com.au](http://www.Judah.com.au) or speak with a Judah Technical Sales Representative by calling 1300-36-7663.

# SPAN TABLES

## 22mm 309A Furring Channel

N2 to AS4055 (0.29kPa)				
CLADDING DETAILS (Plasterboard)	Furring Channel Spacing (mm)			
	Single Span		Continuous Span	
	450	600	450	600
1 x 10mm	1360	1250	1690	1550
1 x 13mm	1390	1300	1740	1590
1 x 16mm	1290	1210	1610	1500
2 x 10mm	1100	1000	1360	1240
2 x 13mm	1120	1040	1390	1290
2 x 16mm	1030	960	1280	1200

\* Service wind loading taken as 0.4225 x W<sub>s</sub>

N3 to AS4055 (0.45kPa)				
CLADDING DETAILS (PLASTERBOARD)	Furring Channel Spacing (mm)			
	Single Span		Continuous Span	
	450	600	450	600
1 x 10mm	1310	1200	1580	1370
1 x 13mm	1380	1270	1550	1340
1 x 16mm	1290	1210	1490	1290
2 x 10mm	1100	1000	1360	1240
2 x 13mm	1120	1040	1390	1230
2 x 16mm	1030	960	1280	1150

\* Service wind loading taken as 0.4096 x W<sub>s</sub>

0.50kPa				
CLADDING DETAILS (PLASTERBOARD)	Furring Channel Spacing (mm)			
	Single Span		Continuous Span	
	450	600	450	600
1 x 10mm	1120	1020	1390	1270
1 x 13mm	1180	1090	1460	1290
1 x 16mm	1170	1080	1430	1240
2 x 10mm	1070	970	1320	1210
2 x 13mm	1110	1010	1360	1190
2 x 16mm	1030	960	1280	1120

Service limited: Dead Load only L / 600

Service limited: G + W<sub>s</sub> Limit L / 200

Unshaded results are strength limited: 1.2G+W<sub>s</sub>

IMPORTANT: REFER TO NOTES OVERLEAF FOR ALL TABLES >>

